



Do you seek a genuinely tranquil space for living? Are your sights set on luxury living, complete with a vastu compliant, contemporary home, all at an affordable cost?



You will find it right here in

## BAUHINIA HOMES

Find your expression in the stylish interiors, majestic views and unique architecture of our villas situated near NGP college, 3.5 kms from Avinashi road, with close proximity to leading schools, colleges, and hospitals.







Brahmha  
**BAUHINIA**  
DREAMS TURNING TO EXPERIENCE



VILLAS TUCKED AMIDST  
SCENIC BEAUTY









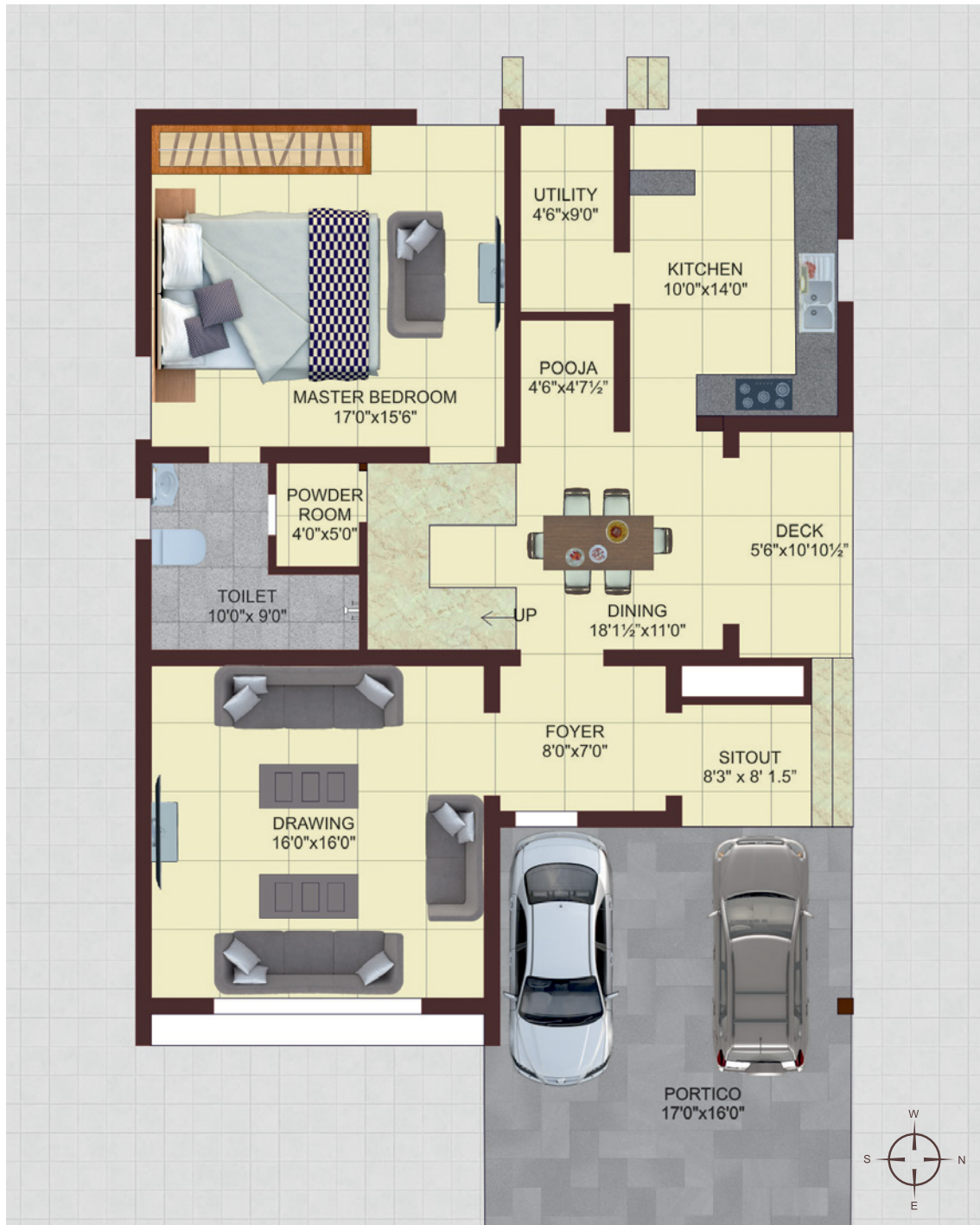


TYPE A - 1&2

PLOT FACING : EAST  
VILLA FACING : NORTH

BUILT UP AREA : 3100 SQFT.  
PLOT AREA : 3025 & 2820 SQFT.





TYPE A

GROUND FLOOR PLAN

FIRST FLOOR PLAN



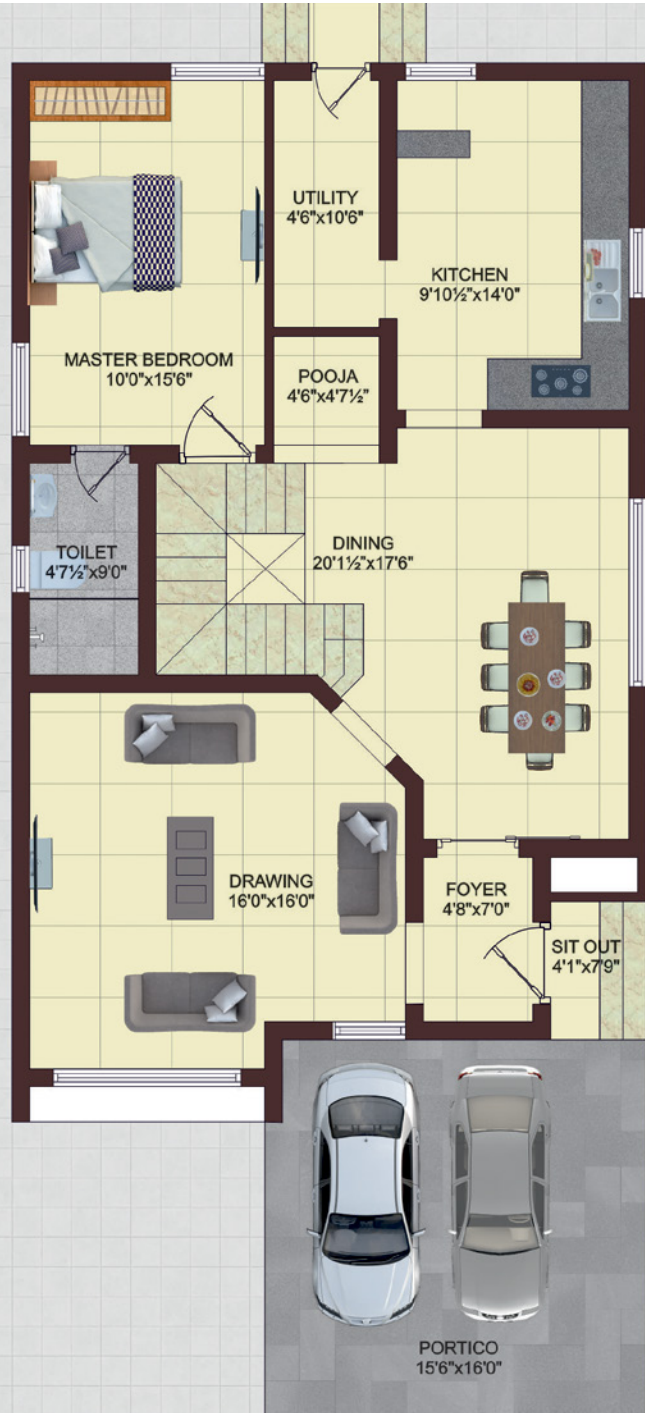


TYPE B - 3,4,5&6

PLOT FACING : EAST  
VILLA FACING : NORTH

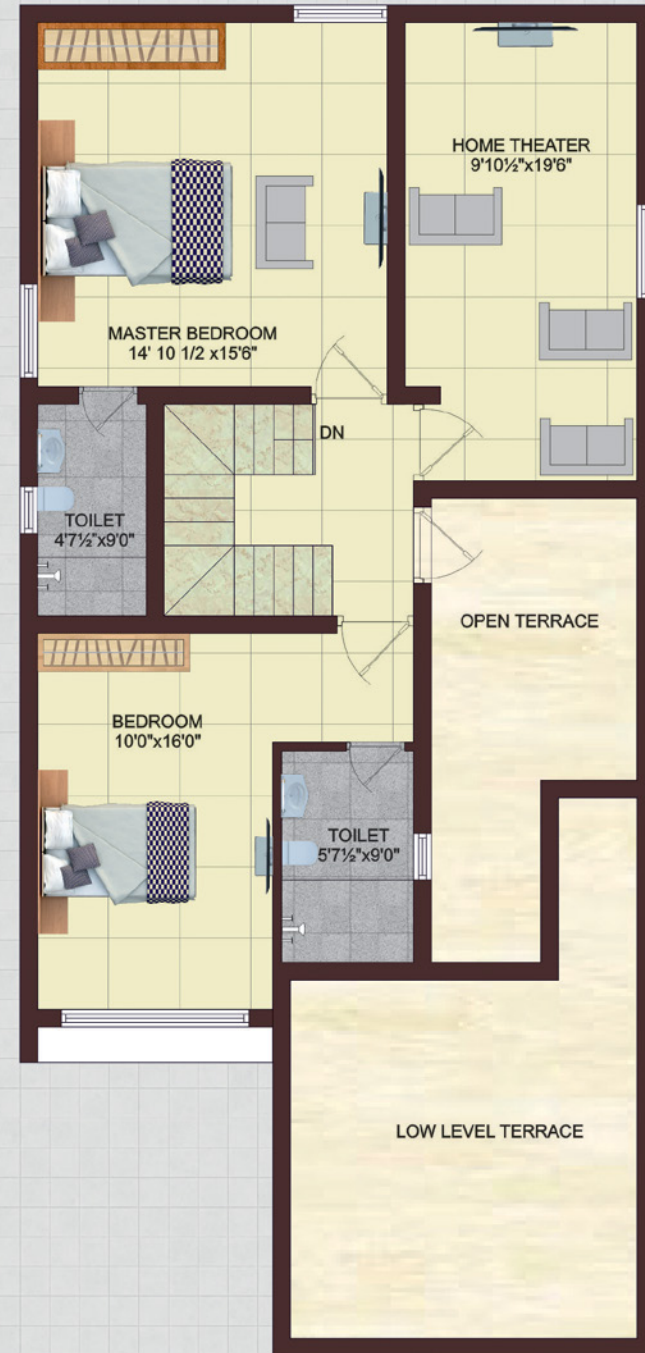
BUILT UP AREA : 2490 SQFT.  
PLOT AREA : 1920 SQFT.





TYPE B

GROUND FLOOR PLAN



FIRST FLOOR PLAN

LOW LEVEL TERRACE





TYPE C - 7,8,9,10&11

PLOT FACING : EAST  
VILLA FACING : NORTH

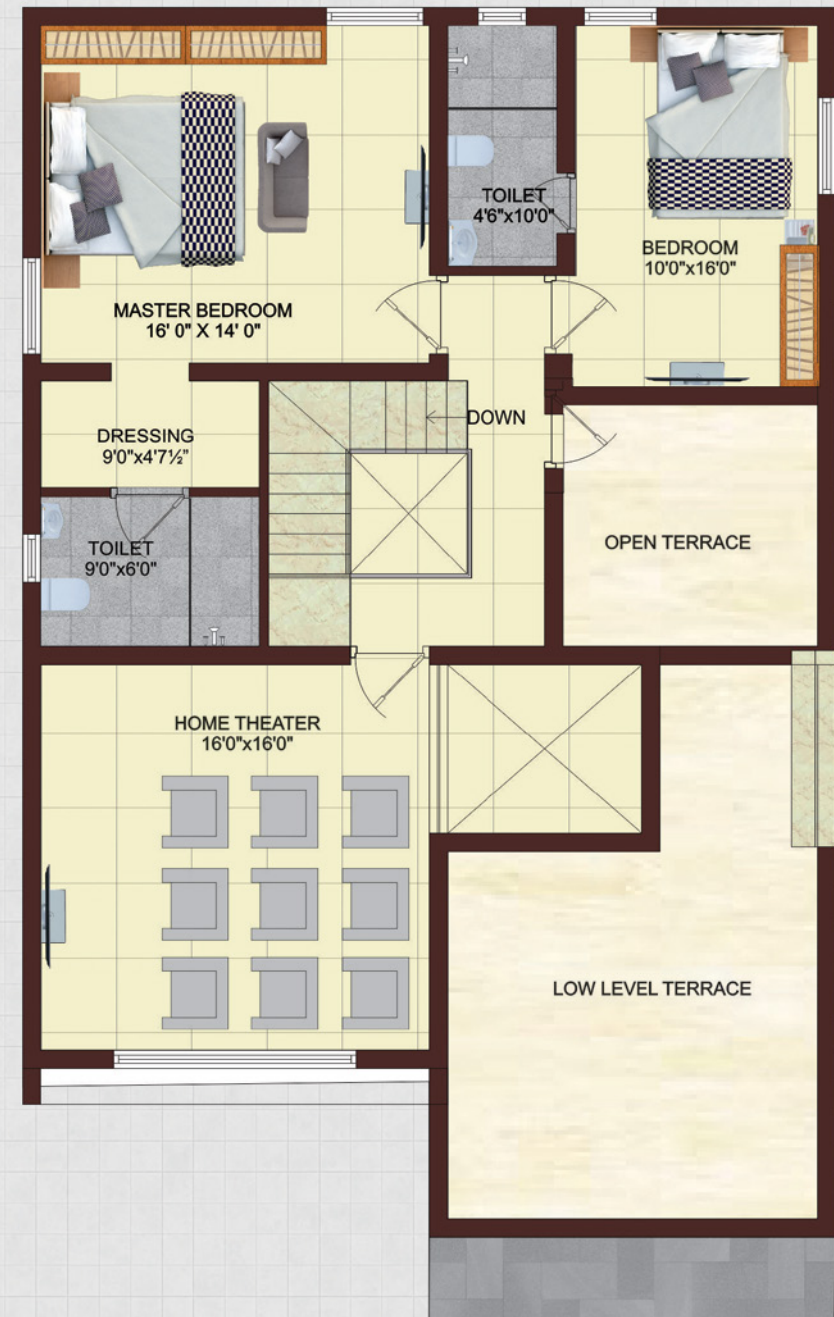
BUILT UP AREA : 2875 SQFT.  
PLOT AREA : 2520 SQFT.





TYPE C

GROUND FLOOR PLAN



FIRST FLOOR PLAN





TYPE D - 12,13,14&15

PLOT FACING : WEST  
VILLA FACING : NORTH

BUILT UP AREA : 2600 SQFT.  
PLOT AREA : 2100 SQFT.





TYPE D GROUND FLOOR PLAN

FIRST FLOOR PLAN



A haven of elegance and luxury, Bauhinia encompasses the grandeur of a European Villa with the relaxed ambiance of a tropical paradise. The meticulous attention to detail is obvious throughout this magnificent gated estate which features a total of 3 bedrooms with 3 bathrooms in each villa.







# AMENITIES



Landscaped Garden

Children's Play area



Jogging Track

Community Hall



Gymnasium

24-hour security with Intercom facility



2000 W DG backup power for each villa and  
back up for common areas



Plug and Play telephone, TV and WIFI Internet

Video door phone & CCTV camera surveillance

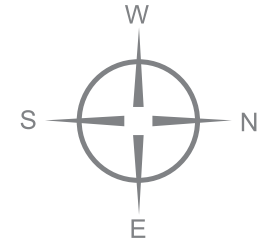


Solar street lights

16



# SITE LAYOUT





# SPECIFICATIONS



## STRUCTURES

RCC-framed structure with earthquake resistant design (Seismic Zone 111).  
9" and 4-1/2" thick plastered brick/fly as/solid block masonry.



## FINISHES

- Facade to be finished with Glass & Texture as per Architect specifications.
- Exterior to be finished with Apex on all sides and elevation as per details.
- Putty finished smooth interior walls for all rooms.
- All balconies and stairways to have SS and Glass handrails.



## JOINERIES

- Branded Aluminium / UPVC with glazed shutters and MS-safety grills.
- Polished paneled main entrance door.
- Laminated flush doors for all other doors.
- One-sided water resistant doors for toilets and utility.



## FLOORING

- Drawing, Home theater, and Master bedroom 2 x 2 vitrified tiles or wooden flooring/optional. • Other rooms 2 x 2 vitrified tiles
- Balconies and utilities to have matte-ceramic tiles.
- Polished Marble/Granite flooring for stairways.
- Paver block flooring for pavements and driveway and porch.



## TOILETS

- Matte ceramic floor tiles and Designer tiles DADO till 7'.
- Chrome-finished pipe fittings & pastel colored sanitary ware for all toilets.
- Health faucets, hot and cold pipes with shower for all toilets.



## KITCHEN

- 4' DADO using designer tiles for kitchen.
- Polished Granite table top with SS sink and 4' DADO using tiles for utility.



## ELECTRICAL

3-Phase electrical connection with all necessary points and modular switches. Telephone / TV / AC points in all rooms



## PLUMBING

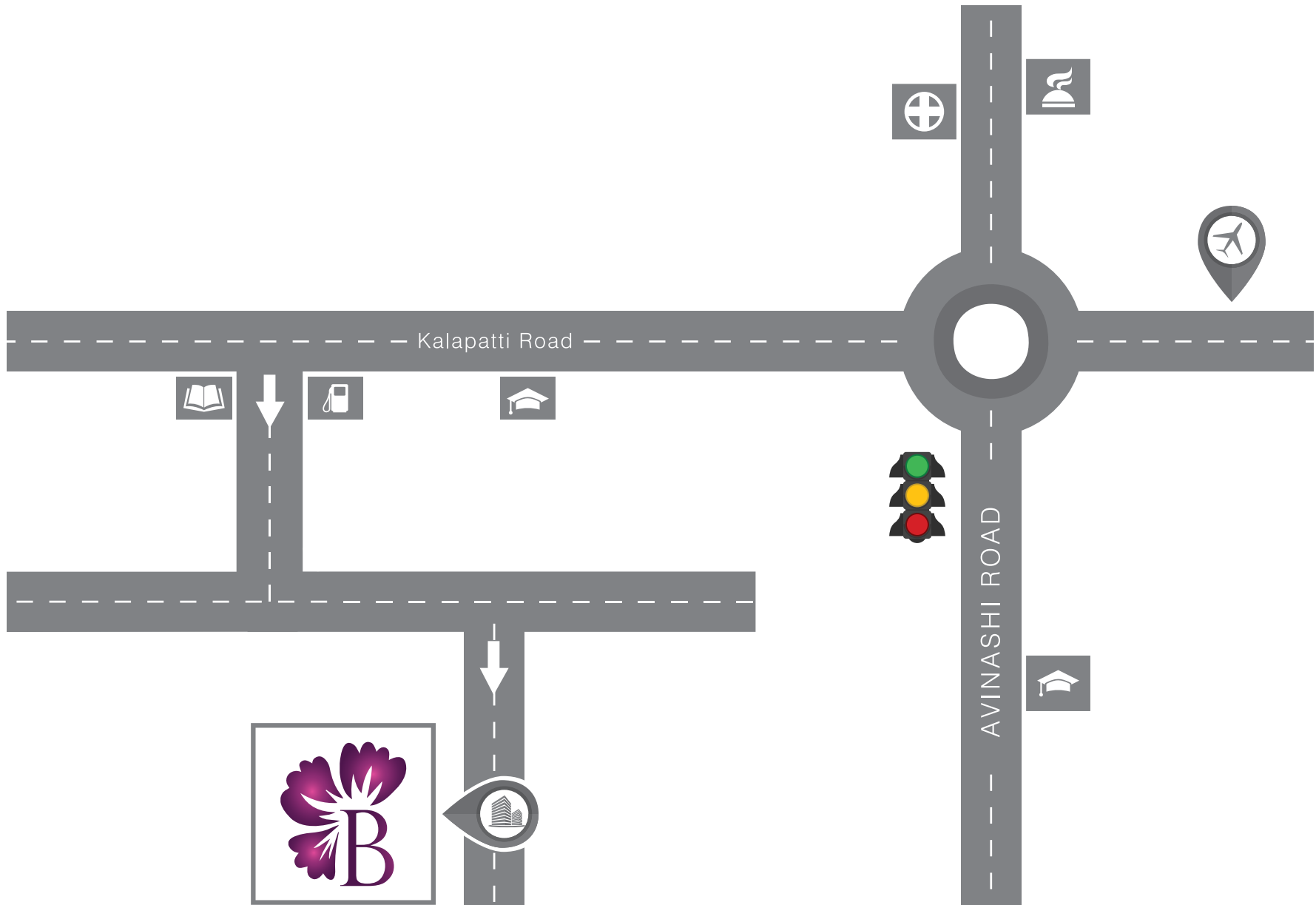
- All pipe fittings JAGUAR or equivalent. All fixtures KOHLER or equivalent.
- Potable water (Siruvani) and Raw Water



## SOLAR WATER HEATER

- Hot water plumbing for all toilets.
- Plumbing connectivity on terrace for Solar water heater.
- Purchasing, installation and maintenance of solar water heater of required capacity is under the scope of the customer.



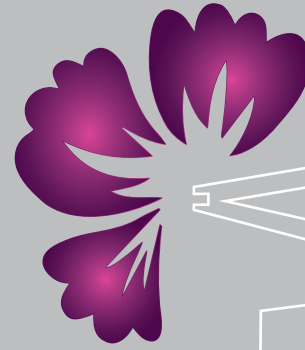




**Disclaimer:** All measurements are approximate and illustrations are artist impressions only. Specifications and plans contained herein are subject to variations, modifications and substitution as may be required by the authorities or recommended by the project consultants and cannot form part of an offer or contract. All statements are believed to be correct at the time of printing this brochure but are not to be regarded as statements or representations of fact. Whilst every reasonable care has been taken while preparing this brochure, the developers and its agents cannot be held responsible for any inaccuracy in its contents. This does not constitute a legal statement. The sizes of villas mentioned are super build up area which includes common areas.







# **Brahmha** Founndattion

No. 33-A, First floor, Race Course road,  
Coimbatore - 641 018.

 **0422 4216888**

 **+91 99441 26262 | +91 99448 26262**

 **info@brahmha.com**

 **www.brahmha.com**